

# WHITE OAK

**BUSINESS PARK AT I-20**

# Prologis Club Car



1560 Appling Harlem Rd., Appling, GA 30802 USA

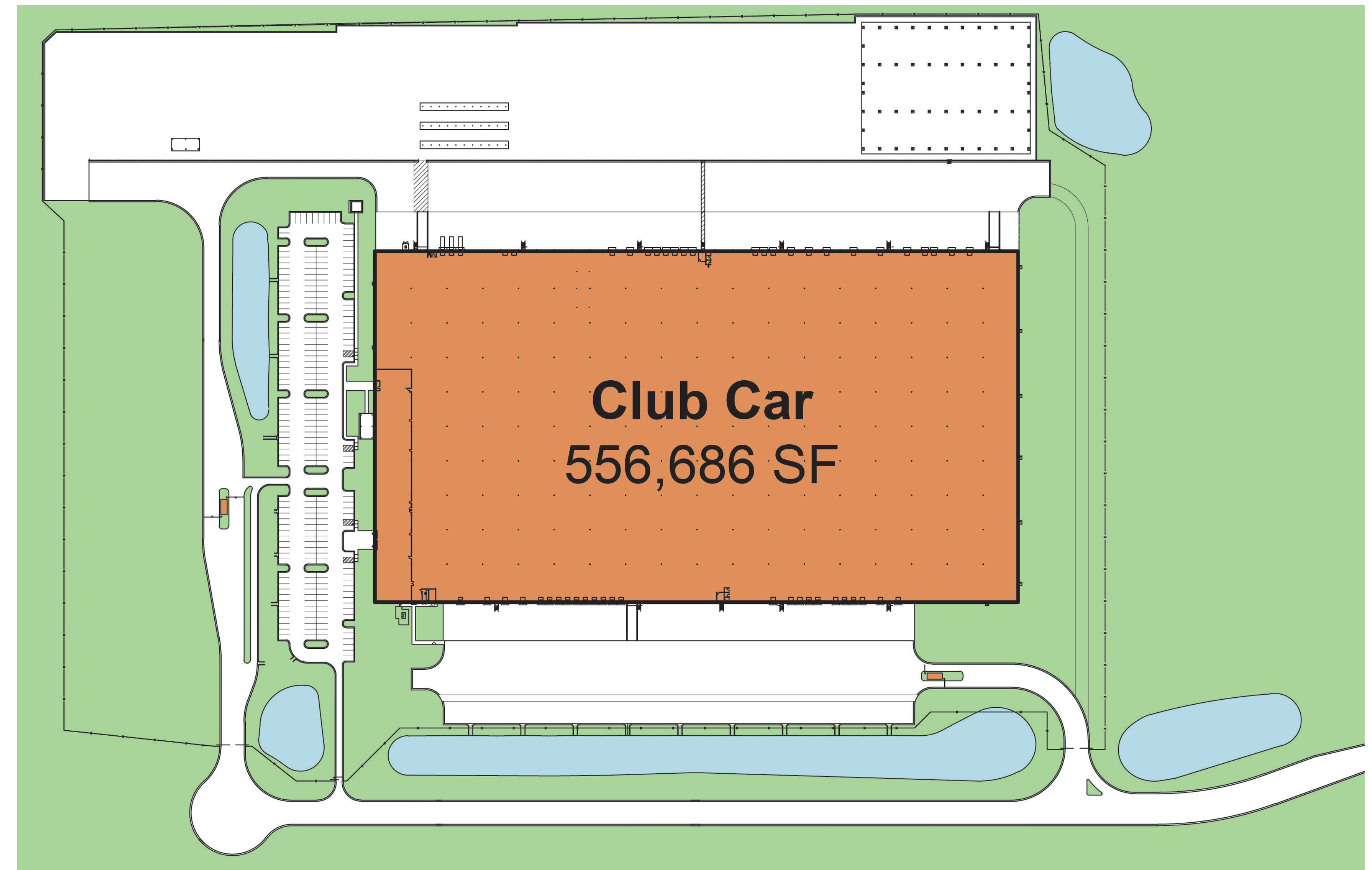
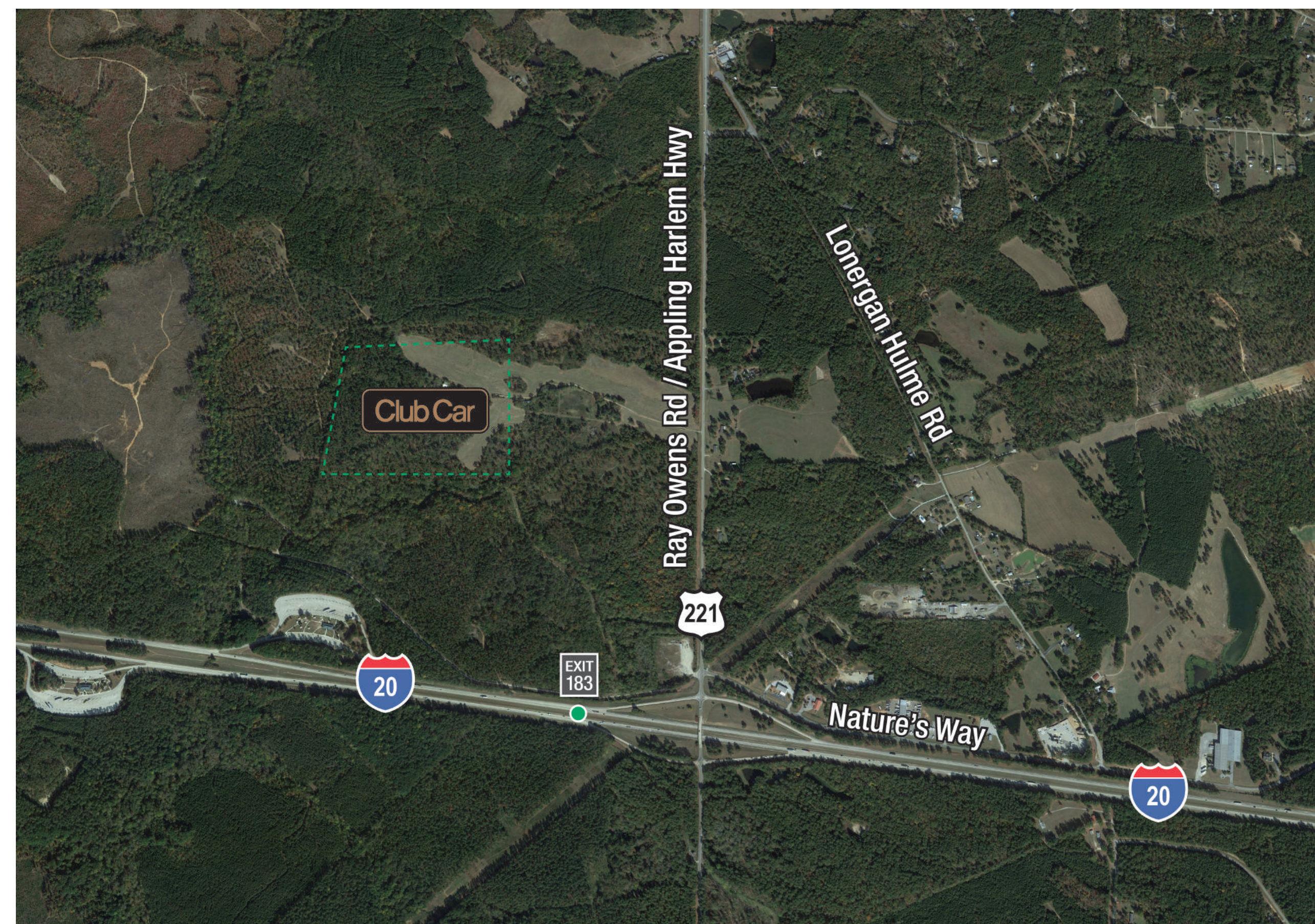
## 556,686 SF Club Car Build-to-suit



# Prologis Club Car

1560 Appling Harlem Rd  
Appling, GA 30802 USA

556,686 SF Club Car  
Build-to-suit



## FACILITY

- 36' Clear Height
- 56' x 54' Column Spacing
- 60' Speed Bays
- 190' Truck Court
- 22,000 SF Office
- LED lighting (interior and exterior)
- Parking for 4,300 Finished Golf Cars (800 Covered)
- ESFR Fire Protection System
- 170 Skylights





COMMON DETENTION/  
CONSERVATION 29+/- ACRES

PARCEL A1  
53+/- ACRES

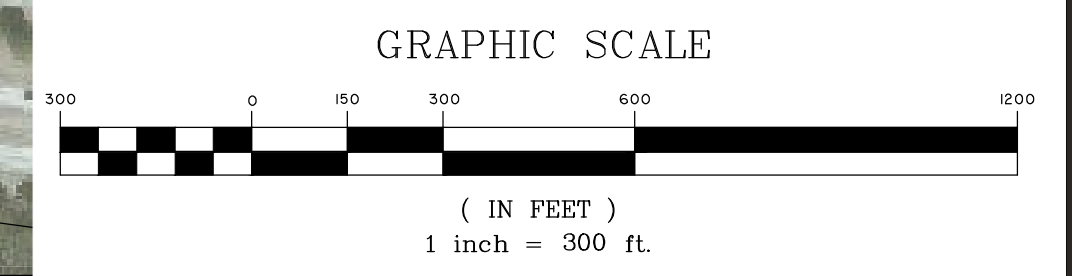
PARCEL A2  
51+/- ACRES

PARCEL C  
50+/- ACRES  
(30+/-)

PARCEL D  
80 +/- ACRES  
(50+/-)

OVERALL PROPERTY  
BOUNDARY -  
± 272 AC

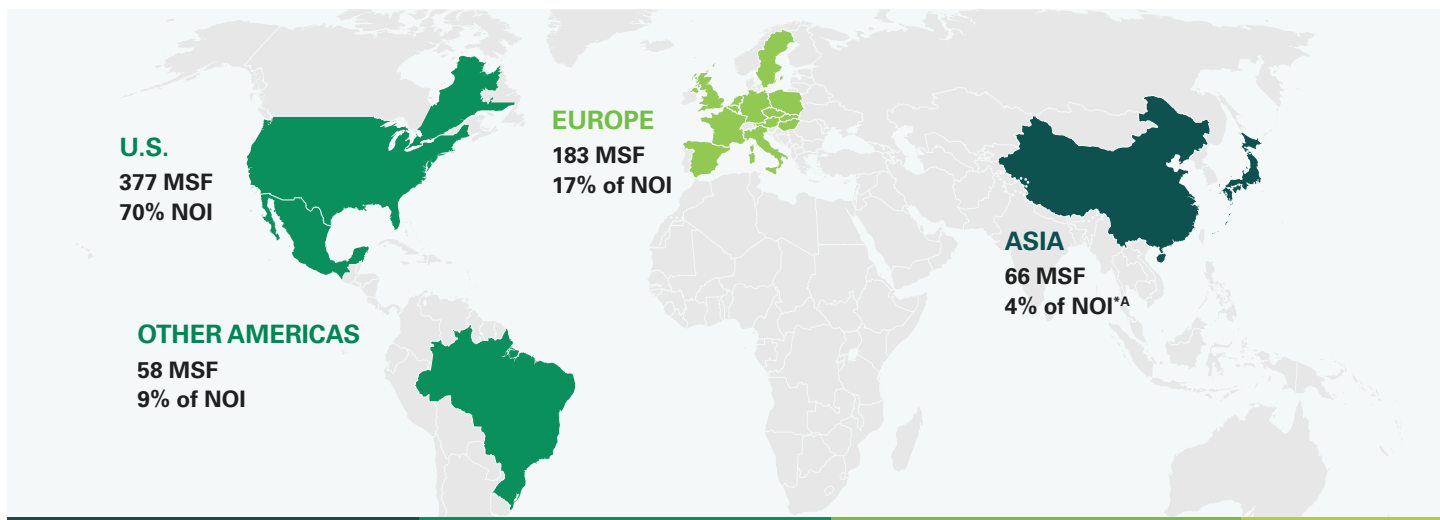
SHARED ACCESS  
(9+/- ACRE ROW)



**THOMAS & HUTTON**  
50 PARK OF COMMERCE WAY  
SAVANNAH, GA 31405 • 912.234.5300  
www.thomasandhutton.com  
COPYRIGHT © 2014 THOMAS & HUTTON

**INDUSTRIAL SITE**  
COLUMBIA COUNTY, GEORGIA  
FEBRUARY 22, 2018

This map illustrates a general plan of the development which is for discussion purposes only. Does not limit or bind the owner and is subject to change and position locations are for illustrative purposes only and are subject to an accurate survey and property description. The producer assumes no legal responsibility for the appreciation or depreciation of any premises, commercial or otherwise, by reason of their inclusion or exclusion from this map. The information contained in this map is subject to change with out notice and is for illustrative purposes only. Unit counts shown above are approximate and may change. Values were provided by outside sources and have not been verified.



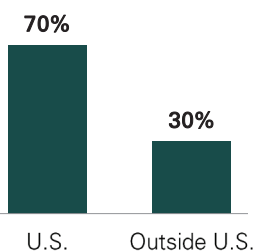
# About Prologis

## Local Partner to Global Trade™

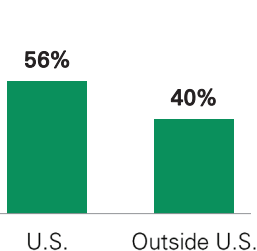
Prologis, Inc. is the global leader in logistics real estate with a focus on high-barrier, high-growth markets. As of December 31, 2017, the company owned or had investments in, on a wholly owned basis or through co-investment ventures, properties and development projects across 684 million square feet (63.6 million square meters) in 19 countries. Prologis leases modern logistics facilities to a diverse base of approximately 5,000 customers. These facilities assist the efficient distribution of goods for the world's best businesses and brands.

### UNIQUE BUSINESS MODEL

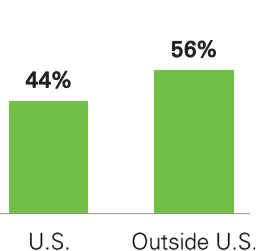
#### Real Estate Operations



#### Strategic Capital



#### Capital Deployment



## Global at a Glance

(as of 12/31/2017)

- **\$78.7 billion** in total assets under management
- **684 million square feet** (63.6 million square meters) owned, managed or under development
- **3,282 industrial properties** across the Americas, Europe and Asia
- Properties in **19 countries** around the world
- **5,000 customers** across a diverse range of industries
- **~1,600 employees** serving customers and investors
- A member of the **S&P 500**
- Named among the **“Global 100 Most Sustainable Corporations in the World”** nine years running

\*This is a non-GAAP financial measure. Please see notes and definitions for further explanation.

<sup>A</sup> NOI calculations based on Prologis share of the operating portfolio.

## Our Leadership

### Hamid R. Moghadam

Chairman & Chief Executive Officer  
San Francisco, California

### Gary E. Anderson

Chief Executive Officer, Europe and Asia  
Denver, Colorado

### Michael S. Curless

Chief Investment Officer  
San Francisco, California

### Edward S. Nekritz

Chief Legal Officer, General Counsel  
Denver, Colorado

### Thomas S. Olinger

Chief Financial Officer  
San Francisco, California

### Eugene F. Reilly

Chief Executive Officer, The Americas  
Boston, Massachusetts

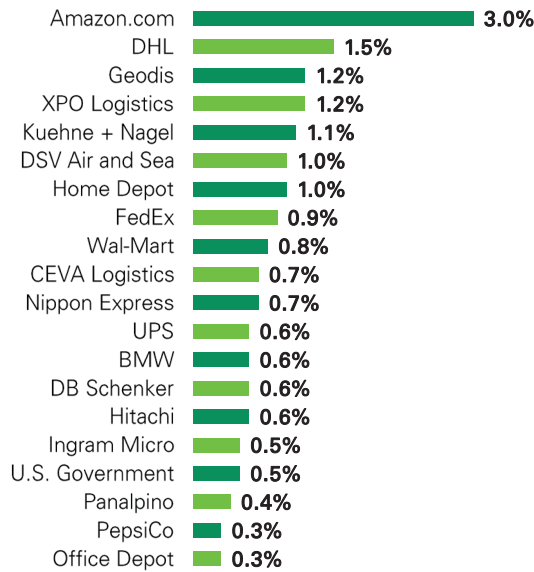
### Diana L. Scott

Chief Human Resources Officer  
San Francisco, California

## TOP 20 CUSTOMERS

(as of 12/31/2017)

Comprise 17.5% of Net Effective Rent



## Awards

- Corporate Knights Global 100 Most Sustainable Corporations in the World
- CR Magazine: Top 10 Industry Sector Best Corporate Citizens for the Financials/Insurance/Real Estate Sector
- Dow Jones Sustainability Indices: North America and Asia Pacific
- Green Street Advisors: REIT Industry's Corporate Governance Leader
- GRESB Green Stars: Sector leader in North America, Asia and Europe
- Harvard Business Review: Best-Performing CEOs in the World – Hamid R. Moghadam
- Inbound Logistics: G76 Green Supply Chain Partner
- NAREIT: Industrial Leader in the Light Award
- Newsweek: Top Green Companies in the U.S.

March, 16<sup>th</sup> 2018

<b>Customer</b>	Club Car
<b>Landlord</b>	Prologis
<b>Project</b>	Club Car / Ingersoll Rand BTS
<b>Building</b>	1560 Appling Harlem Road, Appling, GA 30802
<b>Premises</b>	556,686 SF
<b>Land Area</b>	52.90
<b>FAR %</b>	24.2%
<b>Car Parking</b>	240
<b>Trailer Parking</b>	62
<b>Dock Doors:</b>	42
<b>Sprinkler System</b>	ESFR
<b>Clear Height</b>	36'
<b>Column Spacing</b>	56' x 54'
<b>Est. Delivery Date</b>	January, 2019
<b>Key Contributors</b>	Club Car, Development Authority of Columbia County (DACC), FCL Builders, Fowler Design Associates, Inc.